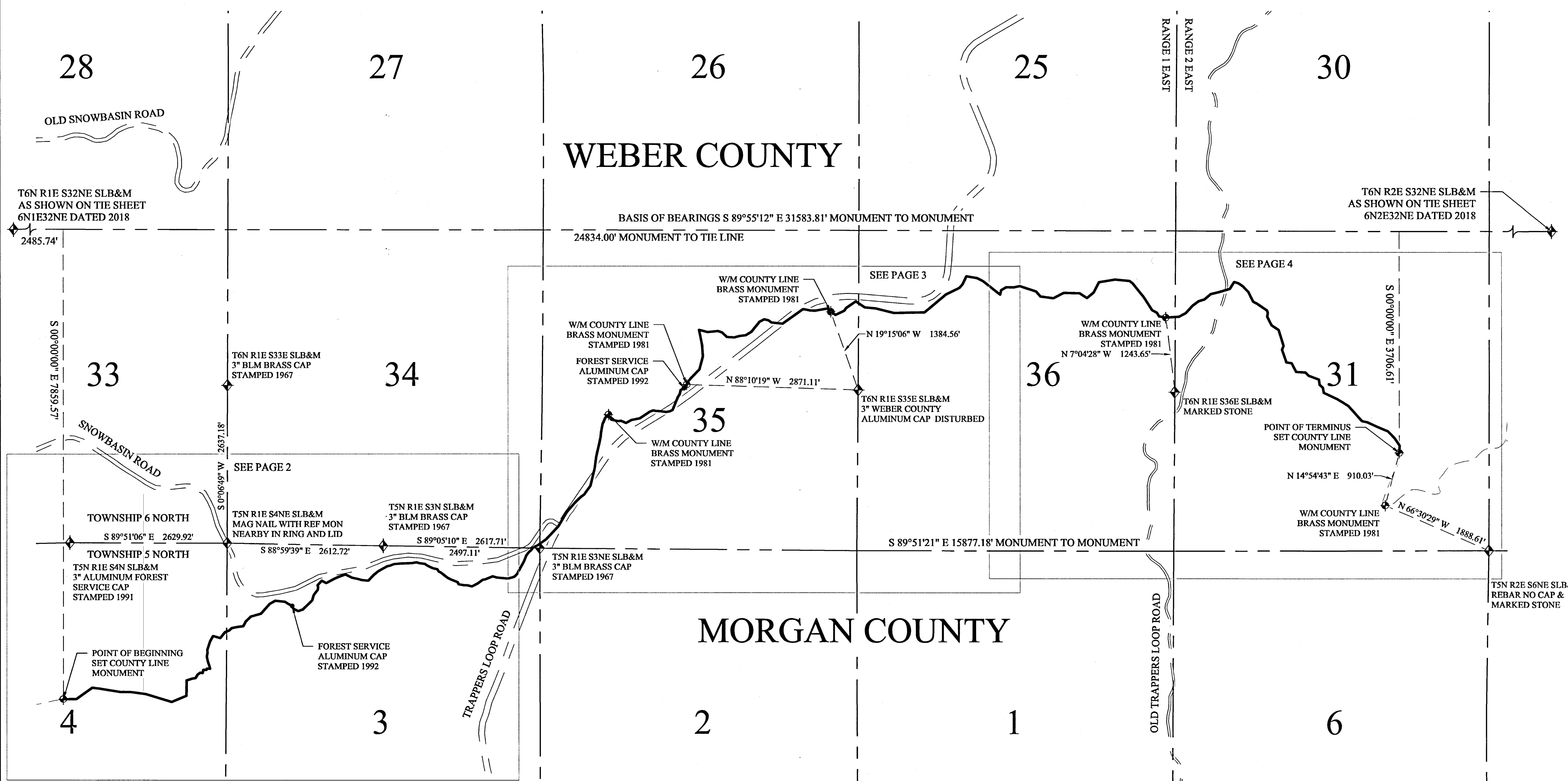


RETRACEMENT OF A PORTION OF THE COUNTY LINE BETWEEN WEBER AND MORGAN COUNTIES

LOCATED WITHIN SECTIONS 3 & 4, TOWNSHIP 5 NORTH, RANGE 1 EAST, & SECTIONS 34, 35, & 36, TOWNSHIP 6 NORTH, RANGE 1 EAST, & SECTION 31, TOWNSHIP 6 NORTH, RANGE 2 EAST, SALE LAKE BASE & MERIDIAN, WEBER & MORGAN COUNTY, UTAH

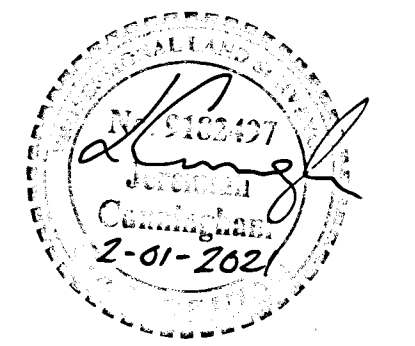
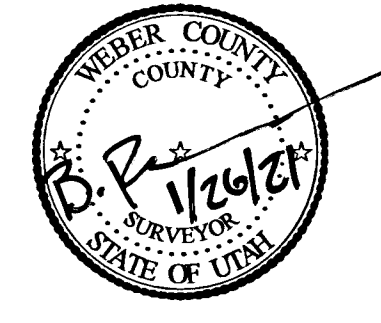
DECEMBER 2020



SURVEYOR'S CERTIFICATE:
I, STEPHEN COLLIER, A PROFESSIONAL LAND SURVEYOR HOLDING LICENSE NUMBER 9453850, IN ACCORDANCE WITH THE LAWS OF THE STATE OF UTAH, AND IN ACCORDANCE WITH TITLE 58, CHAPTER 22, PROFESSIONAL ENGINEERS AND PROFESSIONAL LAND SURVEYORS LICENSING ACT, HAVE COMPLETED A SURVEY OF A PORTION OF THE COUNTY LINE COMMON TO WEBER AND DAVIS COUNTIES IN ACCORDANCE WITH SECTION 17-23-17 AND HAVE VERIFIED ALL MEASUREMENTS AND PLACED MONUMENTS ON THE GROUND AS REPRESENTED HEREON.



COUNTY SURVEYOR'S CERTIFICATE:
THIS IS TO CERTIFY THAT, IN ACCORDANCE WITH SECTIONS 17-50-105 AND 17-23-17, THE WEBER AND MORGAN COUNTY SURVEYORS HAVE MADE A RETRACEMENT OF A PORTION OF THE COUNTY LINE BETWEEN WEBER AND MORGAN COUNTIES AS DESCRIBED AND ON FILE IN THE OFFICE OF THE LIEUTENANT GOVERNOR'S OFFICE OF THE STATE OF UTAH.



SURVEYOR'S NARRATIVE:
THE PURPOSE OF THIS SURVEY IS TO PROVIDE CLARIFICATION ON THE POSITION OF THE COUNTY LINE BETWEEN WEBER AND MORGAN COUNTIES SHOWN HEREON RUNNING ALONG THE RIDGE WHICH IS VERY FLAT MAKING IT DIFFICULT TO ACCURATELY DEFINE. THIS PROJECT WAS INITIATED IN 2014 UNDER ERNEST ROWLEY'S ADMINISTRATION WHICH OBSERVED THE NEED AND PROVIDED BOTH THE MEASUREMENTS AND THE RETRACED LINE USED HEREIN, WHICH WERE VERIFIED BY DRONE IN 2020.

THE BASIS OF BEARINGS IS S 89°55'12" E 31583.81 FEET AS MEASURED BETWEEN T6N R1E S32NE SLB&M.

THE COORDINATE SYSTEM FOR THIS PROJECT IS UTAH STATE PLANE NORTH ZONE, PROJECTED TO GROUND WITH THE FOCAL POINT AT (0,0) USING A SCALE FACTOR OF 1.0002923772456.

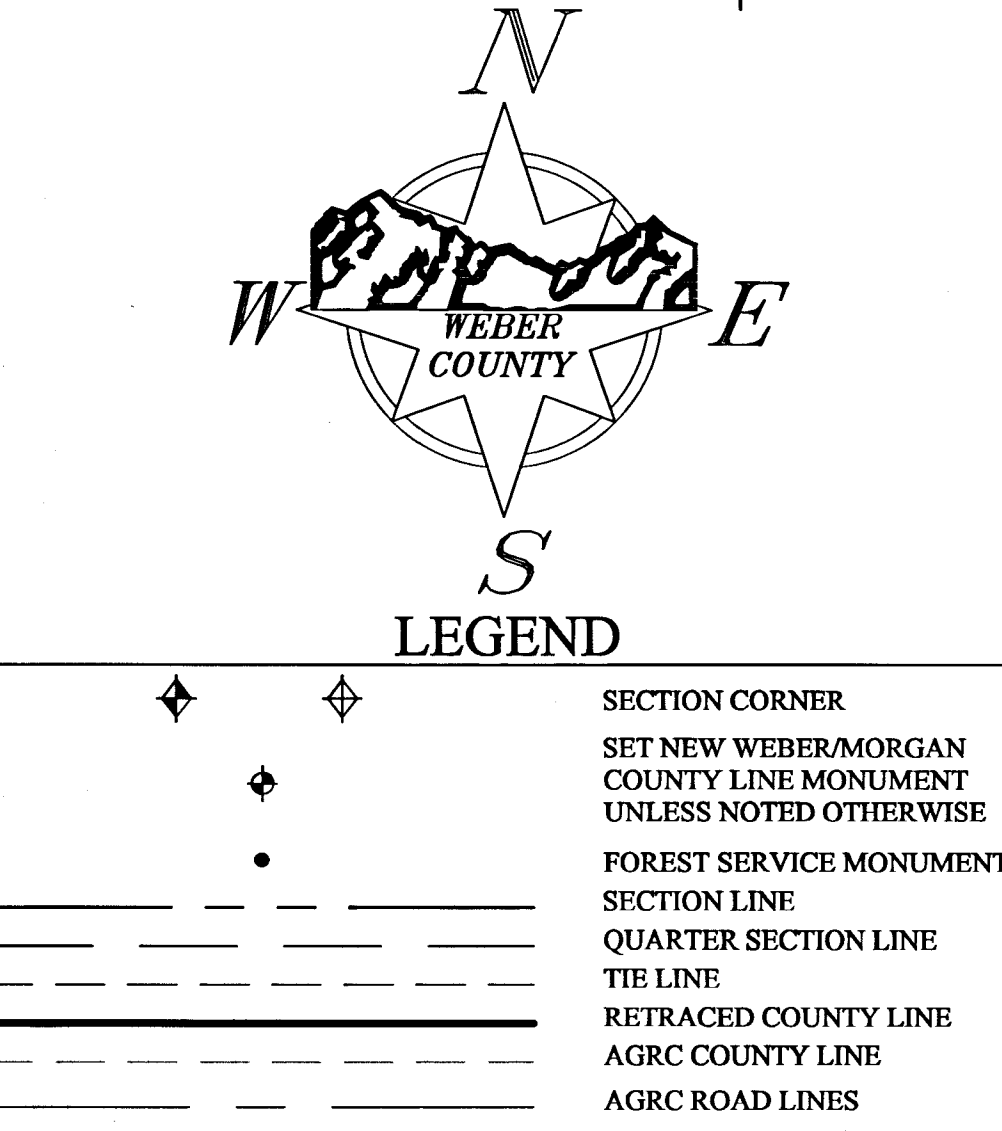
PARCEL LINES SHOWN HEREON ARE AS PROVIDED BY THE UTAH AGRC.

SHEET NO:
1/4

DESCRIPTION:
A PORTION OF THE COUNTY LINE BETWEEN WEBER AND MORGAN COUNTIES AS WAS DEFINED JANUARY 17, 1862 IN SECTION 12 OF THE 11TH ANNUAL SESSION OF THE LEGISLATIVE ASSEMBLY OF THE TERRITORY OF UTAH AS THE SUMMIT OF [THE WASATCH] MOUNTAINS PASSING AROUND THE HEAD WATERS OF OGDEN RIVER, MORE PARTICULARLY DESCRIBED AS FOLLOWS:

BEGINNING AT A POINT ON THE RIDGE SOUTH OF SNOW BASIN ROAD, SAID POINT BEING 2485.74 FEET S 89°55'12" E, AND 7859.57 FEET SOUTH FROM THE NORTHEAST CORNER OF SECTION 32, TOWNSHIP 6 NORTH, RANGE 1 EAST, SALT LAKE BASE & MERIDIAN (NOTE: THE BASIS OF BEARING BEING S 89°55'12" E 31583.81 FEET AS MEASURED BETWEEN FOUND MONUMENTS FOR THE NORTHEAST CORNER OF SECTION 32, TOWNSHIP 6 NORTH, RANGE 1 EAST AND THE NORTHEAST CORNER OF SECTION 32, TOWNSHIP 6 NORTH, RANGE 2 EAST, SALT LAKE BASE & MERIDIAN) AND RUNNING THENCE ALONG SAID RIDGE THE FOLLOWING FORTY-FIVE (45) COURSES: 1) S 89°35'25" E 216.60 FEET, 2) N 54°32'36" E 326.71 FEET, 3) S 83°15'50" E 114.10 FEET, 4) S 80°54'32" E 354.95 FEET, 5) S 89°00'02" E 196.00 FEET, 6) S 82°01'44" E 243.82 FEET, 7) S 73°13'55" E 445.12 FEET, 8) N 67°30'57" E 266.34 FEET, 9) N 00°17'24" E 258.83 FEET, 10) N 72°36'01" E 100.16 FEET, 11) N 82°07'16" E 56.73 FEET, 12) N 28°45'54" E 66.73 FEET, 13) N 56°02'12" E 56.22 FEET, 14) S 79°27'15" E 38.50 FEET, 15) N 13°49'41" E 55.71 FEET, 16) S 89°57'05" E 50.21 FEET, 17) N 26°58'36" E 22.14 FEET, 18) N 88°14'07" E 10.08 FEET, 19) S 89°43'56" E 20.44 FEET, 20) N 86°26'25" E 22.07 FEET, 21) N 15°19'41" W 52.42 FEET, 22) N 19°49'03" W 60.20 FEET, 23) N 12°58'34" W 81.27 FEET, 24) N 01°47'45" W 30.58 FEET, 25) N 11°22'56" E 47.28 FEET, 26) N 01°30'48" W 53.61 FEET, 27) N 17°56'36" E 154.73 FEET, 28) N 29°51'56" E 93.55 FEET, 29) S 80°28'18" E 29.81 FEET, 30) S 73°40'53" E 95.97 FEET, 31) N 39°45'16" E 51.28 FEET, 32) N 40°11'27" E 76.44 FEET, 33) N 68°12'43" E 71.59 FEET, 34) N 46°54'47" E 62.32 FEET, 35) N 78°26'15" E 94.04 FEET, 36) N 83°15'55" E 101.63 FEET, 37) N 26°37'41" E 87.55 FEET, 38) N 47°01'09" E 124.80 FEET, 39) N 73°41'55" E 169.19 FEET, 40) N 42°05'43" E 220.96 FEET, 41) N 59°41'48" E 105.46 FEET, 42) S 84°06'20" E 161.68 FEET, 43) S 58°04'16" E 81.37 FEET, 44) S 63°01'16" E 60.49 FEET TO A FOUND ALUMINUM FOREST SERVICE MONUMENT DATED 1992, 45) S 20°38'49" E 45.09 FEET, 46) S 62°10'49" E 86.58 FEET, 47) S 89°58'36" E 20.90 FEET, 48) N 70°17'11" E 25.72 FEET, 49) N 71°50'23" E 44.74 FEET, 50) N 45°29'10" E 218.99 FEET, 51) N 17°39'51" E 82.91 FEET, 52) N 23°35'28" E 27.99 FEET, 53) N 37°48'21" E 91.74 FEET, 54) N 09°50'50" E 52.18 FEET, 55) N 22°37'41" W 27.47 FEET, 56) N 42°32'41" E 103.74 FEET, 57) S 62°08'14" E 82.52 FEET, 58) N 62°50'35" E 84.69 FEET, 59) S 61°19'23" E 66.71 FEET, 60) N 66°00'43" E 37.78 FEET, 61) N 64°10'07" E 51.91 FEET, 62) N 71°37'41" E 107.95 FEET, 63) S 67°46'01" E 62.83 FEET, 64) S 61°38'08" E 61.06 FEET, 65) S 78°06'49" E 112.71 FEET, 66) S 73°41'41" E 58.98 FEET, 67) S 84°33'34" E 107.40 FEET, 68) N 42°44'17" E 133.78 FEET, 69) N 55°20'47" E 40.23 FEET, 70) N 49°40'11" E 58.35 FEET, 71) N 61°36'28" E 169.87 FEET, 72) N 74°39'23" E 46.53 FEET, 73) N 86°26'34" E 70.63 FEET, 74) N 85°54'56" E 114.80 FEET, 75) N 87°22'27" E 183.59 FEET, 76) N 81°46'58" E 84.76 FEET, 77) S 72°38'10" E 45.13 FEET, 78) S 81°50'39" E 92.88 FEET, 79) S 56°22'48" E 40.43 FEET, 80) S 59°16'19" E 41.73 FEET, 81) S 64°46'30" E 71.35 FEET, 82) S 76°57'21" E 73.69 FEET, 83) S 35°53'12" E 48.43 FEET, 84) S 66°58'50" E 30.93 FEET, 85) S 53°57'52" E 52.20 FEET, 86) S 52°39'04" E 91.41 FEET, 87) S 61°18'38" E 55.55 FEET, 88) S 68°01'10" E 135.01 FEET, 89) S 20°56'48" E 34.42 FEET, 90) S 78°20'43" E 93.21 FEET, 91) N 88°45'50" E 48.51 FEET, 92) S 76°32'53" E 90.19 FEET, 93) N 61°48'36" E 109.67 FEET, 94) N 54°06'31" E 102.83 FEET, 95) N 84°15'08" E 39.40 FEET, 96) N 87°47'48" E 136.99 FEET, 97) S 74°51'00" E 75.52 FEET, 98) S 85°00'20" E 184.64 FEET, 99) N 73°35'16" E 106.09 FEET, 100) N 47°04'50" E 46.66 FEET, 101) N39°33'59" E 26.19 FEET, 102) N 28°16'18" E 48.55 FEET, 104) N 29°04'29" E 162.95 FEET, 105) N 19°34'48" E 92.80 FEET, 106) N 37°44'05" E 62.36 FEET, 107) N 42°24'35" E 28.31 FEET, 108) N 48°07'04" E 40.56 FEET, 109) N 31°30'31" E 36.37 FEET, 110) N 58°31'09" E 60.93 FEET, 111) N 67°02'40" E 38.98 FEET, 112) N 50°35'38" E 43.62 FEET, 113) N 54°30'55" E 132.09 FEET, 114) N 43°46'57" E 297.16 FEET,

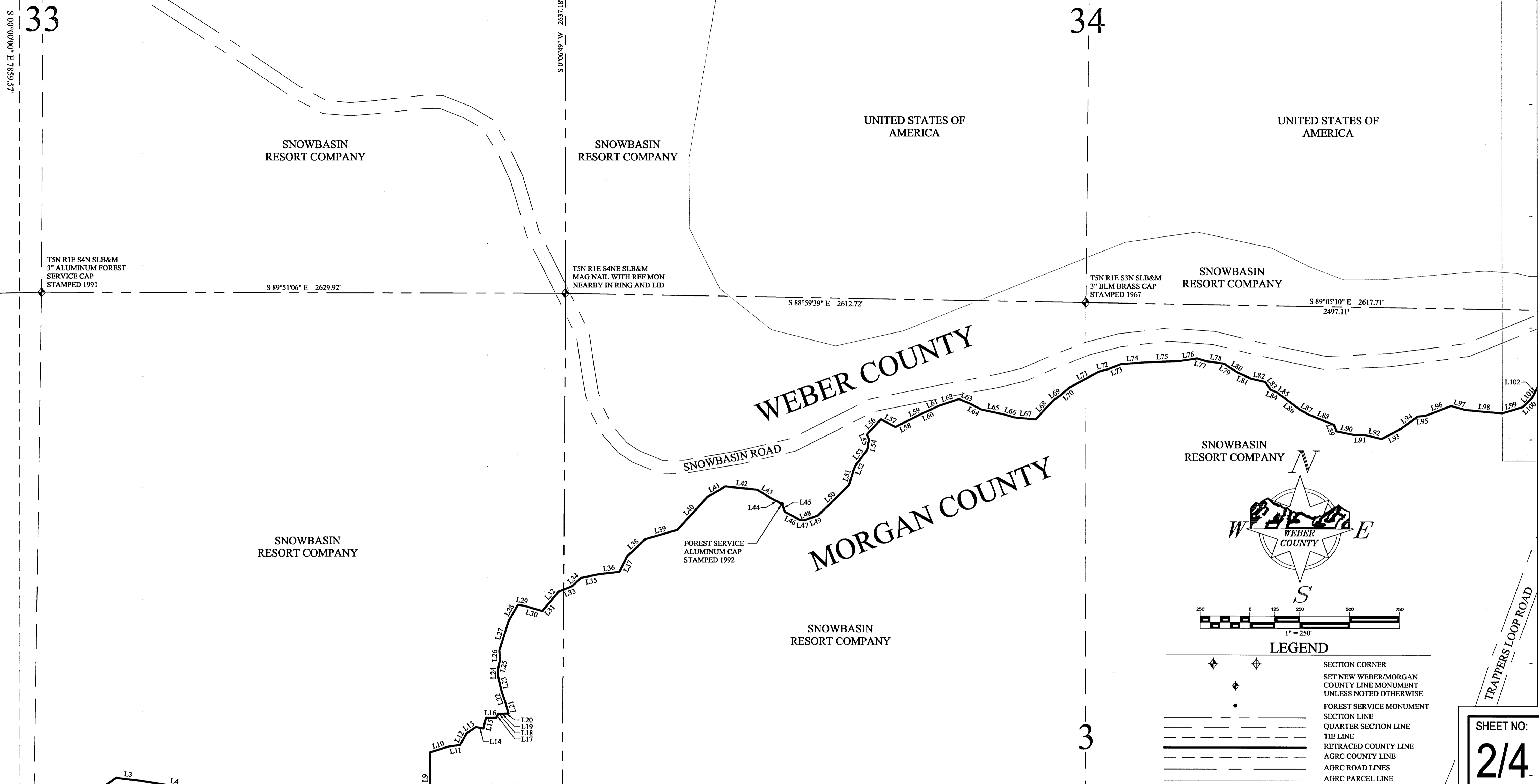
115) N30°22'20" E 284.05 FEET, 116) N 40°50'46" E 208.84 FEET, 117) N 46°03'48" E 128.15 FEET, 118) N 54°38'58" E 72.65 FEET, 119) N 35°13'21" E 180.13 FEET, 120) N 13°20'23" E 304.65 FEET, 121) N 07°57'43" E 177.52 FEET, 122) N 12°33'23" E 231.58 FEET, 123) N 11°43'01" E 113.30 FEET, 124) N 05°07'36" E 76.54 FEET, 125) N 10°10'21" E 142.18 FEET, 126) N 23°31'06" E 102.77 FEET, 127) N 31°15'13" E 32.54 FEET, 128) N 44°56'43" E 53.19 FEET TO A FOUND WEBER/MORGAN COUNTY LINE MONUMENT DATED 1981, 129) S 28°31'23" E 94.97 FEET, 130) S 76°35'14" E 118.67 FEET, 131) N 80°33'41" E 46.65 FEET, 132) S 66°15'30" E 95.41 FEET, 133) N 62°01'50" E 106.26 FEET, 134) N 79°29'45" E 139.57 FEET, 135) N 56°07'18" E 202.01 FEET, 136) N 69°59'36" E 62.02 FEET, 137) S 79°48'22" E 45.75 FEET, 138) S 87°38'04" E 76.27 FEET, 139) S 80°28'50" E 93.25 FEET, 140) N 80°32'19" E 59.98 FEET, 141) N 64°27'01" E 58.00 FEET, 142) N 22°35'20" E 232.69 FEET, 143) N 30°34'11" E 54.78 FEET, 144) N 14°11'50" E 72.90 FEET, 145) N 61°54'51" E 62.48 FEET TO A FOUND ALUMINUM FOREST SERVICE MONUMENT DATED 1992, 146) N 58°19'55" E 44.60 FEET, 147) N 11°34'43" E 40.76 FEET TO A FOUND WEBER/MORGAN COUNTY LINE MONUMENT DATED 1981, 148) N 20°11'36" E 44.34 FEET, 149) N 38°45'24" E 94.70 FEET, 150) N 44°54'21" E 194.35 FEET, 151) N 14°39'12" E 223.97 FEET, 152) N 03°40'07" W 194.49 FEET, 153) N 11°37'52" W 255.49 FEET, 154) S75°48'24" E 146.08 FEET, 155) N 85°05'12" E 176.29 FEET, 156) S 71°40'55" E 71.52 FEET, 157) S 47°47'43" E 112.43, 158) S 86°47'48" E 122.90 FEET, 159) N 73°07'39" E 90.68 FEET, 160) N 83°50'21" E 104.73 FEET, 161) N 58°41'13" E 111.47 FEET, 162) N 39°33'27" E 219.12 FEET, 163) N 62°07'26" E 87.59 FEET, 164) S 76°03'02" E 70.40 FEET, 165) S 53°44'11" E 62.00 FEET, 166) S 83°20'00" E 186.57 FEET, 167) N 54°36'17" E 424.36 FEET, 168) S 79°01'59" E 126.06 FEET, 169) S 87°57'02" E 74.80 FEET, 170) N 79°55'57" E 210.44 FEET, 171) S 46°09'39" E 80.76 FEET TO A FOUND WEBER/MORGAN COUNTY LINE MONUMENT DATED 1981, 172) S 57°26'10" E 93.35 FEET, 173) N 65°02'16" E 164.18 FEET, 174) N 34°44'20" E 57.60 FEET, 175) N 55°31'55" E 190.75 FEET, 176) S 55°57'54" E 179.00 FEET, 177) S 84°54'36" E 179.71 FEET, 178) S 76°00'18" E 316.66 FEET, 179) N 88°44'37" E 517.08 FEET, 180) N 50°27'43" E 467.04 FEET, 181) N 63°18'31" E 250.76 FEET, 182) N 41°50'02" E 75.23 FEET, 183) N 25°34'17" E 151.19 FEET, 184) S 80°36'18" E 178.88 FEET, 185) S 62°11'01" E 111.93 FEET, 186) S 52°22'11" E 369.61 FEET, 187) N 12°36'08" E 74.84 FEET, 188) N 58°06'27" E 96.48 FEET, 189) S 89°06'54" E 138.47 FEET, 190) N 76°39'31" E 92.12 FEET, 191) S 72°08'15" E 287.69 FEET, 192) S 40°49'59" E 111.94 FEET, 193) S 81°37'38" E 213.55 FEET, 194) N 62°13'55" E 197.51 FEET, 195) S 87°59'33" E 266.10 FEET, 196) S 57°50'21" E 144.37 FEET, 197) N 51°11'40" E 148.20 FEET, 198) N 28°03'05" E 191.35 FEET, 199) N 81°02'08" E 270.65 FEET, 200) S 84°30'56" E 239.66 FEET, 201) S 55°16'42" E 66.75 FEET, 202) S 39°01'38" E 286.60 FEET, 203) S 33°07'00" E 268.51 FEET, 204) S 62°00'51" E 90.55 FEET, 205) S 30°46'31" E 71.42 FEET, 206) S 79°33'51" E 111.05 FEET TO A FOUND WEBER/MORGAN COUNTY LINE MONUMENT DATED 1981, 207) N 86°45'27" E 221.46 FEET, 208) N 62°40'22" E 130.35 FEET, 209) N 42°09'24" E 172.17 FEET, 210) N 53°34'21" E 123.73 FEET, 211) N 73°21'24" E 100.98 FEET, 212) N 49°44'05" E 140.01 FEET, 213) N 76°35'05" E 127.10 FEET, 214) N 73°54'30" E 202.98 FEET, 215) N 32°39'38" E 134.64 FEET, 216) S 73°18'09" E 68.67 FEET, 217) S 57°56'52" E 85.33 FEET, 218) S 45°08'58" E 137.66 FEET, 219) S 25°50'58" E 181.66 FEET, 220) S 63°51'38" E 78.93 FEET, 221) S 55°06'10" E 197.13 FEET, 222) S 21°24'10" E 43.86 FEET, 223) S 10°38'15" W 63.20 FEET, 224) S 26°45'15" E 162.00 FEET, 225) S 56°42'10" E 140.85 FEET, 226) S 17°05'44" E 278.59 FEET, 227) S 20°41'11" W 67.55 FEET, 228) S 18°57'12" E 226.48 FEET, 229) S 81°04'48" E 86.65 FEET, 230) S 27°14'06" E 165.26 FEET, 231) S 86°09'26" E 153.65 FEET, 232) S 44°56'55" E 75.30 FEET, 233) S 70°03'44" E 183.19 FEET, 234) S 07°38'43" E 92.40 FEET, 235) S 48°26'48" E 68.52 FEET, 236) S 12°44'47" E 88.90 FEET, 237) S 64°54'42" E 250.44 FEET, 238) S 58°41'21" E 218.05 FEET, 239) S 42°23'56" E 341.74 FEET, 240) S 78°14'33" E 83.00 FEET, 241) S 64°40'33" E 192.15 FEET, 242) S 67°16'37" E 188.67 FEET, 243) S 43°48'56" E 162.22 FEET, 244) S 34°34'38" E 146.78 FEET, AND THE 245) S 03°04'55" W 121.32 FEET TO THE POINT OF TERMINUS, SAID POINT BEING 24834.00 FEET S 89°55'12" E, AND 3706.61 FEET SOUTH FROM THE NORTHEAST CORNER OF SECTION 32, TOWNSHIP 6 NORTH, RANGE 1 EAST, SALT LAKE BASE & MERIDIAN.



MORGAN COUNTY RECORDER
FILED FOR RECORD & RECORDED
AS ENTRY NUMBER
FOR: WEBER COUNTY SURVEYOR
THIS 01 DAY OF FEB
2021 AT 4:14 PM IN BOOK 89
OF PLATS PAGE 81-81, FEE \$0.00
LENN H. KISS
WEBER COUNTY RECORDER
BY: [Signature]


WEBER COUNTY
48 WEST YOUNG STREET
P.O. BOX 886, MORGAN, UTAH 84050
PHONE: (801) 829-6811

2380 Washington Blvd, Suite 370 Ogden, Utah 84401
PHONE: (801) 399-8020



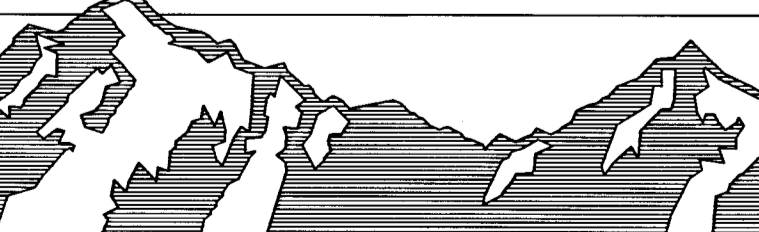
LINE TABLE

NAME	DIRECTION	LENGTH	NAME	DIRECTION	LENGTH	NAME	DIRECTION	LENGTH	NAME	DIRECTION	LENGTH	NAME	DIRECTION	LENGTH
L1	S89° 35' 25"E	216.60'	L21	N15° 19' 41"W	52.42'	L41	N59° 41' 48"E	105.46'	L61	N64° 10' 07"E	51.91'	L81	S64° 46' 30"E	71.35'
L2	N54° 32' 36"E	326.71'	L22	N19° 49' 03"W	60.20'	L42	S84° 06' 20"E	161.68'	L62	N71° 37' 41"E	107.95'	L82	S76° 57' 21"E	73.69'
L3	S83° 15' 50"E	114.10'	L23	N12° 58' 34"W	81.27'	L43	S58° 04' 16"E	81.37'	L63	S67° 46' 01"E	62.83'	L83	S35° 53' 12"E	48.43'
L4	S80° 54' 32"E	354.95'	L24	N1° 47' 45"W	30.58'	L44	S63° 01' 16"E	60.49'	L64	S61° 38' 08"E	61.06'	L84	S66° 58' 50"E	30.93'
L5	S89° 00' 02"E	196.00'	L25	N11° 22' 56"E	47.28'	L45	S20° 38' 49"E	45.09'	L65	S78° 06' 49"E	112.71'	L85	S53° 57' 52"E	52.20'
L6	S82° 01' 44"E	243.82'	L26	N1° 30' 48"W	53.61'	L46	S62° 10' 49"E	86.58'	L66	S73° 41' 41"E	58.98'	L86	S52° 39' 04"E	91.41'
L7	S73° 13' 55"E	445.12'	L27	N17° 56' 36"E	154.73'	L47	S89° 58' 36"E	20.90'	L67	S84° 33' 34"E	107.40'	L87	S61° 18' 38"E	55.55'
L8	N67° 30' 57"E	266.34'	L28	N29° 51' 56"E	93.55'	L48	N70° 17' 11"E	25.72'	L68	N42° 44' 17"E	133.78'	L88	S68° 01' 10"E	135.01'
L9	N0° 17' 24"E	258.83'	L29	S80° 28' 18"E	29.81'	L49	N71° 50' 23"E	44.74'	L69	N55° 20' 47"E	40.23'	L89	S20° 56' 48"E	34.42'
L10	N72° 36' 01"E	100.16'	L30	S73° 40' 35"E	95.97'	L50	N45° 29' 10"E	218.99'	L70	N49° 40' 11"E	58.35'	L90	S78° 20' 43"E	93.21'
L11	N82° 07' 16"E	56.73'	L31	N39° 45' 16"E	51.28'	L51	N17° 39' 51"E	82.91'	L71	N61° 36' 28"E	169.87'	L91	N88° 45' 50"E	48.51'
L12	N28° 45' 54"E	66.73'	L32	N40° 11' 27"E	76.44'	L52	N23° 35' 28"E	27.99'	L72	N74° 39' 23"E	46.53'	L92	S76° 32' 53"E	90.19'
L13	N56° 02' 12"E	56.22'	L33	N68° 12' 43"E	71.59'	L53	N37° 48' 21"E	91.74'	L73	N68° 26' 34"E	70.63'	L93	N61° 48' 36"E	109.67'
L14	S79° 27' 15"E	38.50'	L34	N46° 54' 47"E	62.32'	L54	N9° 50' 50"E	52.18'	L74	N85° 54' 56"E	114.80'	L94	N54° 06' 31"E	102.83'
L15	N13° 49' 41"E	55.71'	L35	N78° 26' 15"E	94.04'	L55	N22° 37' 41"W	27.47'	L75	N87° 22' 27"E	183.59'	L95	N84° 15' 08"E	39.40'
L16	S89° 57' 05"E	50.21'	L36	N83° 15' 55"E	101.63'	L56	N42° 32' 41"E	103.74'	L76	N81° 46' 58"E	84.76'	L96	N68° 47' 48"E	136.99'
L17	N26° 58' 36"E	22.14'	L37	N26° 37' 41"E	87.55'	L57	S62° 08' 14"E	82.52'	L77	S72° 38' 10"E	45.13'	L97	S74° 51' 00"E	75.52'
L18	N88° 14' 07"E	10.08'	L38	N47° 01' 09"E	124.80'	L58	N62° 50' 35"E	84.69'	L78	S81° 50' 39"E	92.88'	L98	S85° 00' 20"E	184.64'
L19	S89° 43' 56"E	20.44'	L39	N73° 41' 55"E	169.19'	L59	N63° 19' 23"E	66.71'	L79	S56° 22' 48"E	40.43'	L99	N73° 35' 16"E	106.09'
L20	N86° 26' 25"E	22.07'	L40	N42° 05' 43"E	220.96'	L60	N66° 00' 43"E	37.78'	L80	S59° 16' 19"E	41.73'	L100	N47° 04' 50"E	46.66'



MORGAN COUNTY

48 WEST YOUNG STREET
P.O. BOX 886, MORGAN, UTAH 84050
PHONE: (801) 829-6811



WEBER COUNTY

2380 Washington Blvd. Suite 370 Ogden, Utah 84401
PHONE: (801) 399-8020

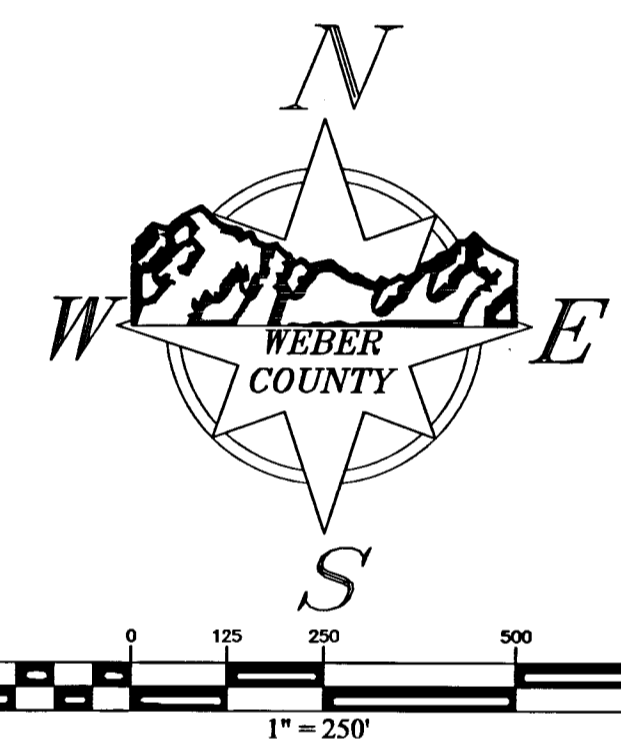
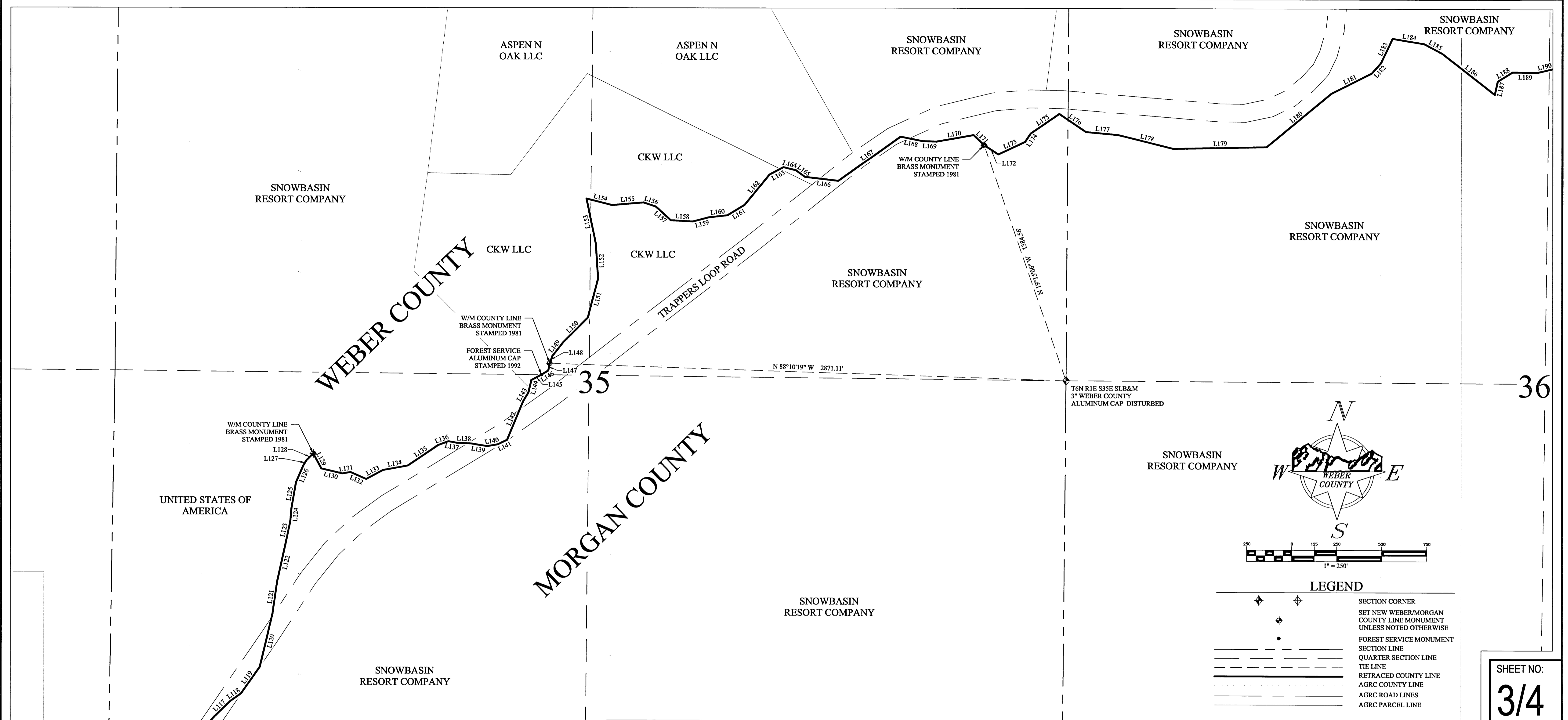
MORGAN COUNTY RECORDER
FILED FOR RECORD & RECORDED
AS ENTRY NUMBER _____
FOR: _____
THIS _____ DAY OF _____
20____ AT _____ IN BOOK _____
OF PLATS PAGE _____, FEE _____

MORGAN COUNTY RECORDER
BY: _____

WEBER COUNTY RECORDER
FILED FOR RECORD & RECORDED
AS ENTRY NUMBER 3122634
FOR: _____
THIS 1 DAY OF Feb
2021 AT _____ IN BOOK 97
OF PLATS PAGE 91-91, FEE _____

WEBER COUNTY RECORDER
BY: [Signature]

SHEET NO:
2/4




LEGEND

	SECTION CORNER
	SET NEW WEBER/MORGAN COUNTY LINE MONUMENT UNLESS NOTED OTHERWISE
	FOREST SERVICE MONUMENT
	SECTION LINE
	QUARTER SECTION LINE
	TIE LINE
	RETRACED COUNTY LINE
	AGRC COUNTY LINE
	AGRC ROAD LINES
	AGRC PARCEL LINE

SHEET NO:
3/4

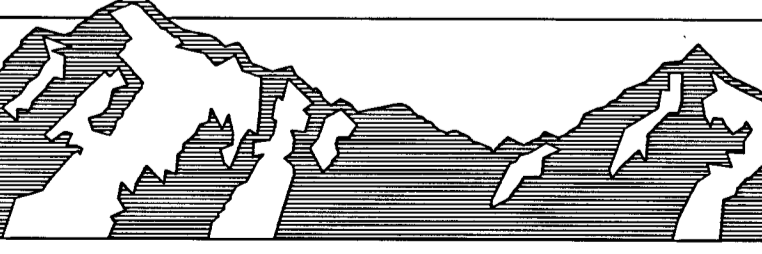
LINE TABLE

NAME	DIRECTION	LENGTH	NAME	DIRECTION	LENGTH	NAME	DIRECTION	LENGTH	NAME	DIRECTION	LENGTH	NAME	DIRECTION	LENGTH
L101	N39° 33' 59"E	26.19'	L121	N7° 57' 43"E	177.52'	L141	N64° 27' 01"E	58.00'	L161	N58° 41' 31"E	111.47'	L181	N63° 18' 31"E	250.76'
L102	N28° 16' 18"E	48.55'	L122	N12° 33' 23"E	231.58'	L142	N22° 33' 20"E	232.69'	L162	N39° 33' 27"E	219.12'	L182	N41° 50' 02"E	75.23'
L103	N27° 09' 35"E	33.96'	L123	N11° 43' 01"E	113.30'	L143	N30° 34' 11"E	54.78'	L163	N62° 07' 26"E	87.59'	L183	N25° 34' 17"E	151.19'
L104	N29° 04' 29"E	162.95'	L124	N5° 07' 36"E	76.54'	L144	N14° 11' 50"E	72.90'	L164	S76° 03' 02"E	70.40'	L184	S80° 36' 18"E	178.88'
L105	N19° 34' 48"E	92.80'	L125	N10° 10' 21"E	142.18'	L145	N61° 54' 51"E	62.48'	L165	S53° 44' 13"E	62.00'	L185	S62° 11' 01"E	111.93'
L106	N37° 44' 05"E	62.36'	L126	N23° 31' 06"E	102.77'	L146	N58° 19' 55"E	44.60'	L166	S83° 20' 00"E	186.57'	L186	S52° 22' 11"E	369.61'
L107	N42° 24' 35"E	28.31'	L127	N31° 15' 13"E	32.54'	L147	N11° 34' 43"E	40.76'	L167	N54° 36' 17"E	424.36'	L187	N12° 36' 08"E	74.84'
L108	N48° 07' 04"E	40.56'	L128	N44° 56' 43"E	53.19'	L148	N20° 11' 36"E	44.34'	L168	S79° 01' 59"E	126.06'	L188	N58° 06' 27"E	96.48'
L109	N31° 30' 31"E	36.37'	L129	S28° 31' 23"E	94.97'	L149	N38° 45' 24"E	94.70'	L169	S87° 57' 02"E	74.80'	L189	S89° 06' 54"E	138.47'
L110	N58° 31' 09"E	60.93'	L130	S76° 35' 14"E	118.67'	L150	N44° 54' 21"E	194.35'	L170	N79° 55' 57"E	210.44'	L190	N76° 39' 31"E	92.12'
L111	N67° 02' 40"E	38.98'	L131	N80° 33' 41"E	46.65'	L151	N14° 39' 12"E	223.97'	L171	S46° 09' 39"E	80.76'	L191	S72° 08' 15"E	287.69'
L112	N50° 35' 38"E	43.62'	L132	S66° 15' 30"E	95.41'	L152	N3° 40' 07"W	194.49'	L172	S57° 26' 10"E	93.35'	L192	S40° 49' 59"E	111.94'
L113	N54° 30' 55"E	132.09'	L133	N62° 01' 50"E	106.26'	L153	N11° 37' 52"W	255.49'	L173	N65° 02' 16"E	164.18'	L193	S81° 37' 38"E	213.55'
L114	N43° 46' 57"E	297.16'	L134	N79° 29' 45"E	139.57'	L154	S75° 48' 24"E	146.08'	L174	N34° 44' 20"E	57.60'	L194	N62° 13' 55"E	197.51'
L115	N30° 22' 20"E	284.05'	L135	N56° 07' 18"E	202.01'	L155	N55° 05' 12"E	176.29'	L175	N55° 31' 55"E	190.75'	L195	S87° 59' 33"E	266.10'
L116	N40° 50' 46"E	208.84'	L136	N69° 59' 36"E	62.02'	L156	S71° 40' 55"E	71.52'	L176	S55° 57' 54"E	179.00'	L196	S57° 50' 21"E	144.37'
L117	N46° 03' 48"E	128.15'	L137	S79° 48' 22"E	45.75'	L157	S47° 47' 43"E	112.43'	L177	S84° 54' 36"E	179.71'	L197	N51° 11' 40"E	148.20'
L118	N54° 38' 58"E	72.65'	L138	S87° 38' 04"E	76.27'	L158	S86° 47' 48"E	122.90'	L178	S76° 00' 18"E	316.66'	L198	N28° 03' 05"E	191.35'
L119	N35° 13' 21"E	180.13'	L139	S80° 28' 50"E	93.25'	L159	N75° 07' 39"E	90.68'	L179	N88° 44' 37"E	517.08'	L199	N81° 02' 08"E	270.65'
L120	N13° 20' 35"E	304.65'	L140	N80° 32' 19"E	59.98'	L160	N83° 50' 21"E	104.73'	L180	N50° 27' 43"E	467.04'	L200	S84° 30' 56"E	239.06'



MORGAN COUNTY

48 WEST YOUNG STREET
P.O. BOX 886, MORGAN, UTAH 84050
PHONE: (801) 829-6811



WEBER COUNTY

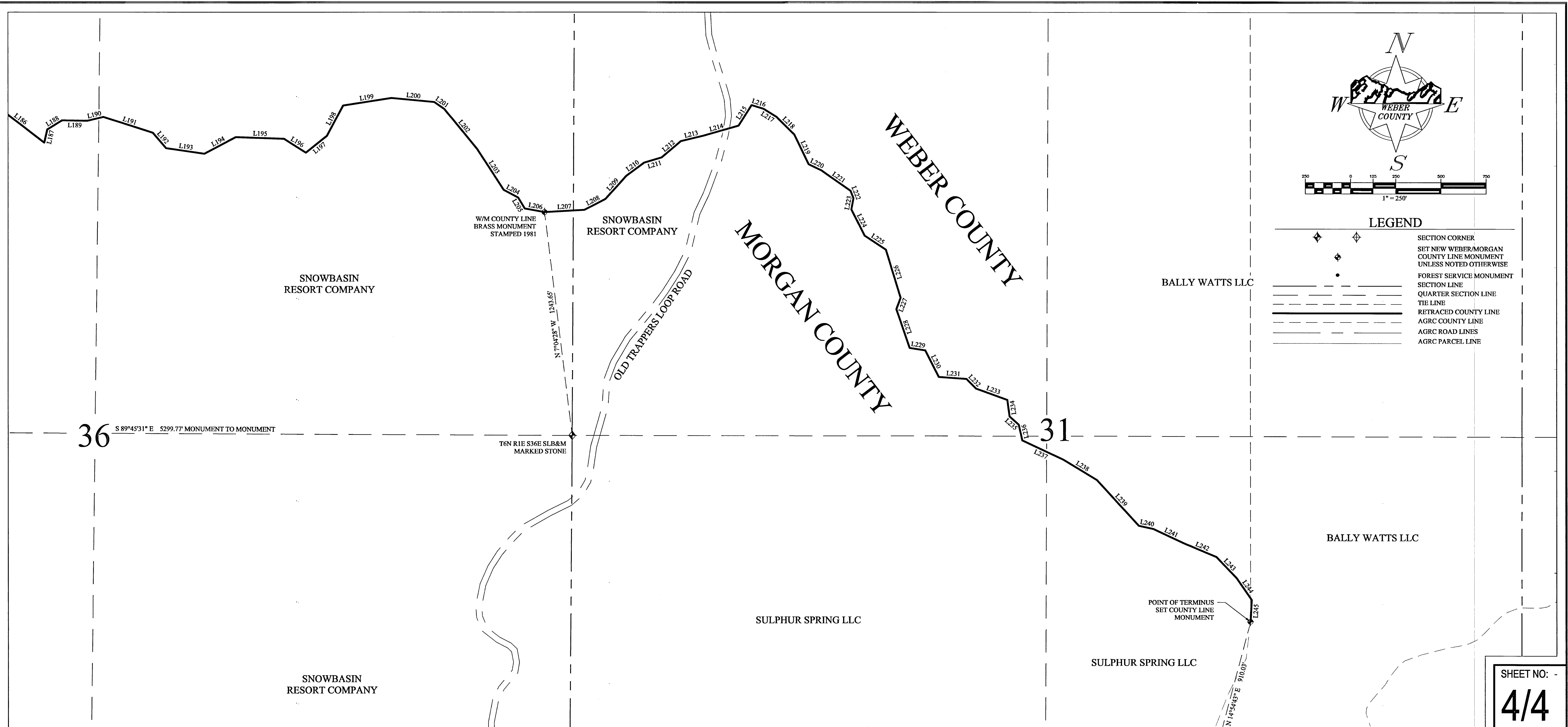
2380 Washington Blvd, Suite 370 Ogden, Utah 84401
PHONE: (801) 399-8020

MORGAN COUNTY RECORDER
FILED FOR RECORD & RECORDED
AS ENTRY NUMBER _____
FOR: _____
THIS _____ DAY OF _____
20__ AT _____ IN BOOK _____
OF PLATS PAGE _____, FEE _____

MORGAN COUNTY RECORDER
BY: _____

WEBER COUNTY RECORDER
FILED FOR RECORD & RECORDED
AS ENTRY NUMBER 3122434
FOR: _____
THIS 1 DAY OF FEB
2021 AT _____ IN BOOK 89
OF PLATS PAGE 81-84, FEE _____

WEBER COUNTY RECORDER
BY: Jule



36 S 89°45'31" E 5299.77' MONUMENT TO MONUMENT

T&N RIE S36E SLB&M MARKED STONE

31

POINT OF TERMINUS SET COUNTY LINE MONUMENT

SHEET NO: -
4/4

LINE TABLE

NAME	DIRECTION	LENGTH	NAME	DIRECTION	LENGTH	NAME	DIRECTION	LENGTH	NAME	DIRECTION	LENGTH
L181	N63° 18' 31"E	250.76'	L201	S55° 16' 42"E	66.75'	L221	S55° 06' 10"E	197.13'	L241	S64° 40' 33"E	192.15'
L182	N41° 50' 02"E	75.23'	L202	S39° 01' 38"E	286.60'	L222	S21° 24' 10"E	43.86'	L242	S67° 16' 37"E	188.67'
L183	N25° 34' 17"E	151.19'	L203	S33° 07' 00"E	268.51'	L223	S10° 38' 15"W	63.20'	L243	S43° 48' 56"E	162.22'
L184	S80° 36' 18"E	178.88'	L204	S62° 00' 51"E	90.55'	L224	S26° 45' 15"E	162.00'	L244	S34° 34' 38"E	146.78'
L185	S62° 11' 01"E	111.93'	L205	S30° 46' 31"E	71.42'	L225	S56° 42' 10"E	140.85'	L245	S3° 04' 55"W	121.32'
L186	S52° 22' 11"E	369.61'	L206	S79° 33' 51"E	111.05'	L226	S17° 05' 44"E	278.59'			
L187	N12° 36' 08"E	74.84'	L207	N86° 45' 27"E	221.46'	L227	S20° 41' 11"W	67.55'			
L188	N58° 06' 27"E	96.48'	L208	N62° 40' 22"E	130.35'	L228	S18° 57' 12"E	226.48'			
L189	S89° 06' 54"E	138.47'	L209	N42° 09' 24"E	172.17'	L229	S81° 04' 48"E	86.65'			
L190	N76° 39' 31"E	92.12'	L210	N53° 34' 21"E	123.73'	L230	S27° 14' 06"E	165.26'			
L191	S72° 08' 15"E	287.69'	L211	N73° 21' 24"E	100.98'	L231	S86° 09' 26"E	153.65'			
L192	S40° 49' 59"E	111.94'	L212	N49° 44' 05"E	140.01'	L232	S44° 56' 55"E	75.30'			
L193	S81° 37' 38"E	213.55'	L213	N76° 35' 05"E	127.10'	L233	S70° 03' 44"E	183.19'			
L194	N62° 13' 55"E	197.51'	L214	N73° 54' 30"E	202.98'	L234	S7° 38' 43"E	92.40'			
L195	S87° 59' 33"E	266.10'	L215	N32° 39' 38"E	134.64'	L235	S48° 26' 48"E	68.52'			
L196	S57° 50' 21"E	144.37'	L216	S73° 18' 09"E	68.67'	L236	S12° 44' 47"E	88.90'			
L197	N51° 11' 40"E	148.20'	L217	S57° 56' 52"E	85.33'	L237	S64° 54' 42"E	220.44'			
L198	N28° 03' 05"E	191.35'	L218	S45° 08' 58"E	137.66'	L238	S58° 41' 21"E	218.05'			
L199	N81° 02' 08"E	270.65'	L219	S25° 50' 58"E	181.66'	L239	S42° 23' 56"E	341.74'			
L200	S84° 30' 56"E	239.06'	L220	S63° 51' 38"E	78.93'	L240	S78° 14' 33"E	83.00'			

MORGAN COUNTY
48 WEST YOUNG STREET
P.O. BOX 886, MORGAN, UTAH 84050
PHONE: (801) 829-6811

WEBER COUNTY
2380 Washington Blvd. Suite 370 Ogden, Utah 84401
PHONE: (801) 399-8020

MORGAN COUNTY RECORDER
FILED FOR RECORD & RECORDED
AS ENTRY NUMBER _____
FOR: _____
THIS _____ DAY OF _____
20 ____ AT _____ IN BOOK _____
OF PLATS PAGE _____, FEE _____

WEBER COUNTY RECORDER
FILED FOR RECORD & RECORDED
AS ENTRY NUMBER 3122634
FOR: _____
THIS 1 DAY OF FEB
20 21 AT _____ IN BOOK 99
OF PLATS PAGE 81-84, FEE _____